

Cascade LED Lights™



LED Light Source

- Extremely bright 450 Lumens
- Cool white color temperature
- 6 watt, 12 volts, 10-1/2" wide
- 50,000 working hour lifetime
- Wide movable swivel head

Imported



Accessory Bag fits all Cascade Lights
EBGC 22" x 4" x 3"



LEDBR1

Cascade LED Light Source with bracket for one-sided banner.



LEDBR2

2 Cascade LED lights with bracket for two-sided use.



LEDLF

Cascade LED Light Source with clamp for banner stand attachment.



LEDPU

Cascade LED Light Source with bracket for for Pop-Ups.



LEDCC

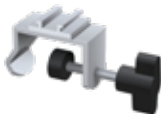
Cascade LED Light Source with C Clamp for multipurpose use.



Use for Banner Stands:
BN2, BN3, BV2, BV3, RY1, RY3, RY5, RY7 (2), NX21, NX251, NX31, GCOBS1, UB3, UB5, GS2, GS3, MB1, MB3, MB5.



Use for Banner Stands:
BN2, BN3, BV2, BV3, RY2, RY4, RY6, RY8, NX22, NX52, NX32, GCOBS2, GS2, GS3, MB2, MB4, MB6.



BN4, BN5 (2), BN6, JN4, JN5 (2), JN6, B2X, B25, B3X, B4X, Apollo Stands, Straight Flat Walls (2), Harmony & Visual Graphic Stands, Mega Wave Walls, Cool C Walls.



Use for:
Presto Pop-Ups, Collage Pop-Ups, & most other manufacturers pop-ups.



Great for:
Table tops, and flat divider walls. Clamps to horizontal and vertical surfaces. Grip range open to 2-1/2".

For Portable Graphic Stands, Pop-Ups & Banner Stands